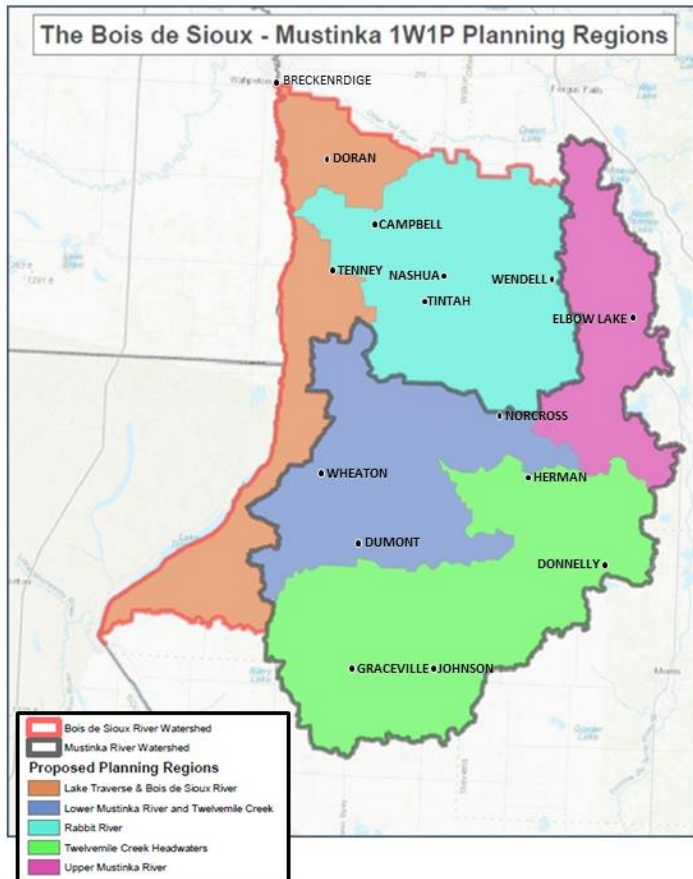


We will leave Doran at 9 am. There is plenty of parking around their city park (3<sup>rd</sup> & 4<sup>th</sup> Streets).

Before Lunch: Doran to Herman

1. Doran Creek Flooding & Restoration
2. Wilkin County Ditch #8 Retrofit (2018)
3. Rabbit River Conservation & Impoundment Projects
4. Stop Here: Upper Lightning Clean-Out, Draw-Down & Control Structure Project
5. Aastad Wildlife Management Area
6. Privately Owned Calcerous Fens
7. Lightning Lake, Control Structure & Mustinka River Beginnings
8. Mustinka River Corridor Project
9. Samantha Lake
10. RIM Easement
11. Water and Sediment Control Basins
12. Pine Ridge Park & Mustinka River Dam
13. Big Lake Project
14. Out of the Bus at Herman's Broken Paddle for Lunch



We will leave Herman at 12:35 pm. We should arrive in Doran at 4 pm.

After Lunch: Herman to Doran

1. Grant County Ditch #8 & Fish Passage Barrier
2. Fivemile Creek
3. El Dorado Township Flood Area
4. Traverse County Ditch #31 Lined Waterway Outlet Project
5. Toqua Lake Chain
6. TCD #52/Lake Traverse Water Quality Improvement Project
7. Redpath Impoundment Region
8. Stop Here: North Ottawa Flood Impoundment
9. City of Campbell
10. Arrive in Doran.

